



**Chicago  
Pneumatic**



**Built to last!**

**Hydraulic breakers**

# RX means R-liable to the X-treme

## Rugged and hard-hitting

Don't be fooled by their attractive, streamlined design, RX hydraulic breakers are reliable with all the power you need to get the job done, and more. They are also rugged and built to last. Attach the right RX breaker to the carrier of your choice, and power your way through the job in no time.

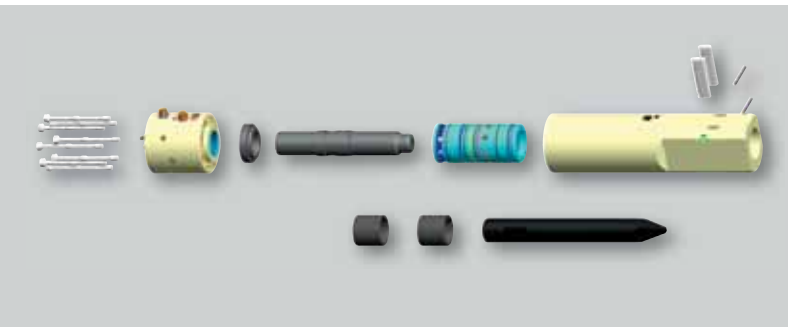
## These breakers will do the job

The smart design of RX hydraulic breakers with few parts and only two moving parts, offers a high grade of availability and reliability. On the small and medium-sized RXs there are no expensive high-pressure accumulators or filling

devices to worry about either. The aim of this smart design is to provide breakers that will handle the toughest jobs, in all weathers, without complaining and go on doing the job – year in, year out.

## Noise reduced means: less trouble with the neighborhood on the job site.

Thanks to the RX recoil absorbing concept and the polyurethan insulated breaker box system, RX breakers are amongst the most silent breakers and in line with the outdoor equipment directive 2000/14/EU.



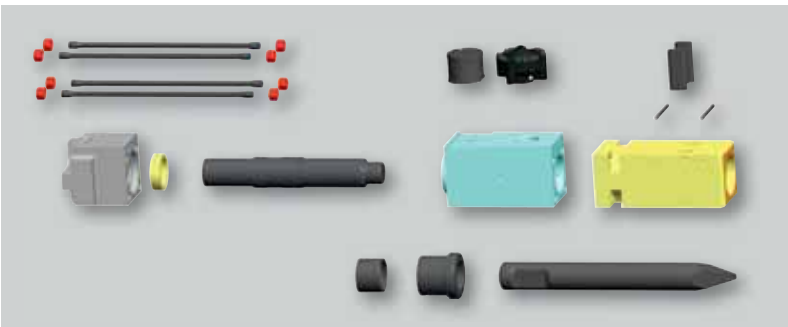
### RX hydraulic breakers (RX2 – RX22)

These RX breakers have fewer parts and only two moving parts – no high pressure accumulator, less sources for failures. They are easy to maintain, service and repair – no multi torque wrench needed.\*

### RX hydraulic breakers (RX25 – RX53)

Due to technological barriers these breakers are designed with side bolts but with cutting edge technology fasteners – head bolts with insert threads and no nuts.

\* Not RX11



### Traditional breaker technology with 4 side bolts and nuts

The traditional hydraulic breaker that has been around for decades is complex with many parts.

# Value-for-money features

## Power booster – for maximum performance

The power booster feature on RX breakers enables you to get higher breaking performance without increasing the hydraulic input in tougher breaking applications. While the impact energy remains constant, the breaker increases the blow frequency, which results in increased percussive performance.

## Power Stop function – to protect your investment

This feature reduces blank firing, thus helping to protect breaker and carrier while increasing the lifetime of the components.

## Power control valve – to increase productivity

RX breakers (from RX25 upwards) are equipped with a power control valve. This feature enables you to set the breaker characteristics according to the application – for higher productivity.

## High impact, low noise

RX breakers are prepared for the future as they already comply with current and future regulations stipulated in Noise Emission of Outdoor Equipment Directive 2000/14/EC.

## No side bolts (RX2 – RX22\*)

This feature makes RX breakers even more reliable, because non existing parts can simply not fail...

Even better: opening a breaker for resealing can be done with ordinary hand tools.

## Cutting edge side bolts system (RX25 – RX53)

This innovative fastener system with head bolts and insert threads distributes the thread strain equally.

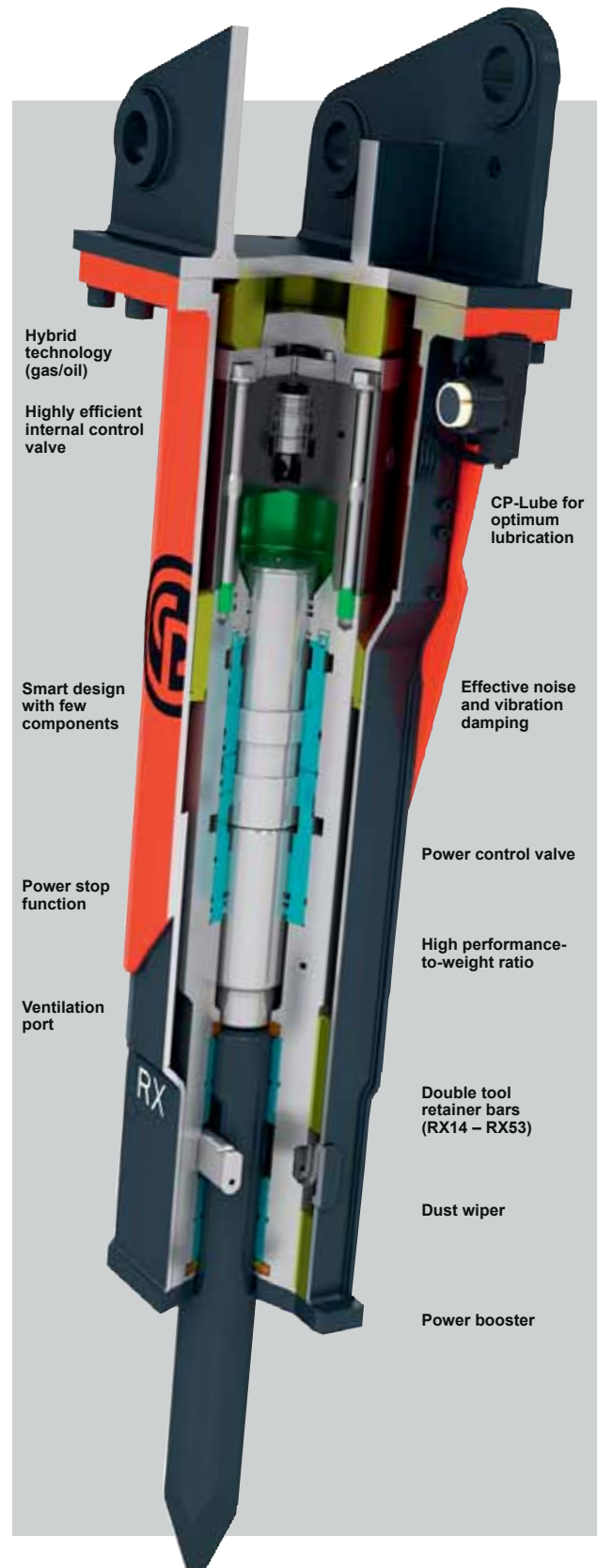
## Dust wiper (optional, from RX14 upwards)

This feature helps to increase the lifetime of your wear components. Simple and reliable – it keeps abrasive dust out and the grease in.

## CP-Lube – automatic lubrication (optional)

Breaker models from RX14 upwards can be equipped with CP-Lube. This feature ensures optimal lubrication of the wear bushings and the working tool and thus avoids unnecessary downtime.

\* Not RX11





# Innovative, own breaker technology



## A great brand since more than 100 years

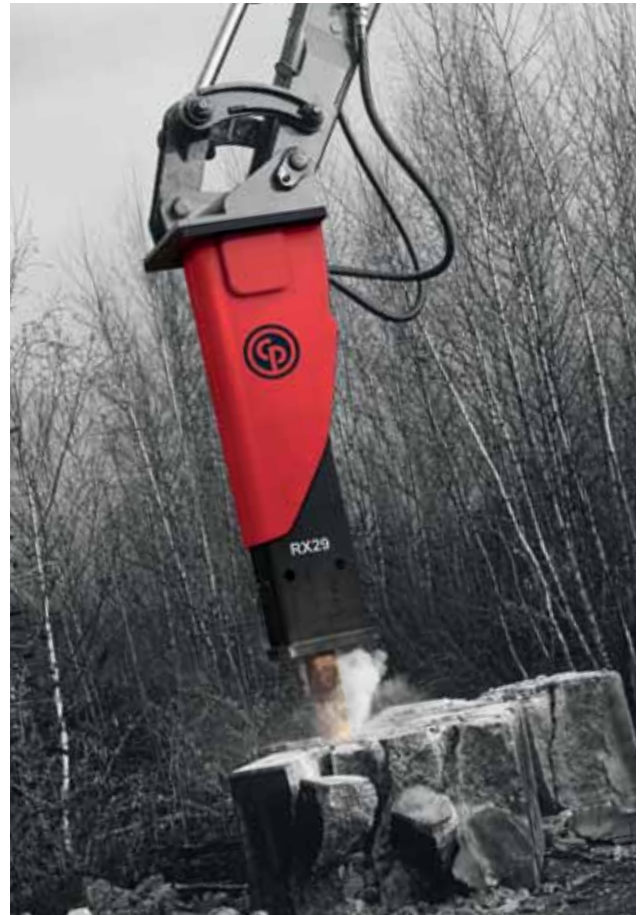
Chicago Pneumatic has been a well known brand since 1901. Today we are a globally acting company providing a wide range of high-quality tools for the construction, demolition and mining industry

## Extensive investments in R&D

The innovative technology, unique design and value-for-money features of the RX hydraulic breaker range are the direct result of extensive investments in R&D.

## Worldwide customer support

Buying an RX breaker is just the beginning. Chicago Pneumatic distributors offer reliable service support. Genuine spare parts for your RX breaker are available worldwide, with short delivery times.



# Thirteen breakers at your service

Model	Service weight		Carrier weight class		Operating pressure		Oil flow rate		Blow frequency	Working tool diameter		Sound power level	Part no.
	kg	lb <sup>1)</sup>	t	lb <sup>2)</sup>	bar	PSI	l/min	gpm	bpm	mm	in	dB(A)	
<b>RX2</b>	117	258	1,3-3,0	2,900-6,600	110-130	1,600-1,890	15-35	4-9	560-1700	42	1.65	109 <sup>4)</sup> /81 <sup>5)</sup>	8460 0500 38
<b>RX3</b>	166	366	2,1-4,5	4,600-9,900	110-140	1,600-2,030	30-50	8-13	670-1450	52	2.04	111 <sup>4)</sup> /83 <sup>5)</sup>	8460 0500 39
<b>RX4</b>	233	514	2,9-6,0	6,400-13,200	110-140	1,600-2,030	35-60	9-16	520-1150	62	2.44	113 <sup>4)</sup> /85 <sup>5)</sup>	8460 0500 40
<b>RX6</b>	284	626	4,2-9,0	9,300-19,800	110-140	1,600-2,030	45-75	12-20	530-1150	70	2.75	114 <sup>4)</sup> /86 <sup>5)</sup>	8460 0500 41
<b>RX8</b>	380	838	5,2-12,0	11,500-26,500	120-150	1,740-2,180	60-90	16-24	530-1050	80	3.14	115 <sup>4)</sup> /87 <sup>5)</sup>	8460 0500 42
<b>RX11</b>	550	1,210	9-15	19,800-33,100	120-150	1,740-2,180	70-100	18-26	590-1100	80	3.14	116 <sup>4)</sup>	3363 1095 21
<b>RX14</b>	800	1,760	10-17	22,000-37,500	150-170	2,180-2,470	100-120	26-32	650-850	100	3.93		3363 1049 61
<b>RX18</b>	1200	2,650	15-24	33,100-52,900	150-170	2,180-2,470	120-140	32-37	550-720	120	4.72		3363 1052 39
<b>RX22</b>	1500	3,310	17-28	37,500-61,700	150-170	2,180-2,470	140-160	37-42	520-680	135	5.31		3363 1051 01
<b>RX25</b>	1800	3,970	20-33	44,100-72,800	150-170	2,180-2,470	130-180	34-48	400-680 (460-800) <sup>3)</sup>	140	5.51		3363 1056 01
<b>RX29</b>	2200	4,850	25-40	55,100-88,200	150-170	2,180-2,470	150-200	40-53	375-600 (400-800) <sup>3)</sup>	150	5.90		3363 1058 93
<b>RX45</b>	3000	6,610	29-46	63,900-101,400	160-180	2,320-2,610	210-260	55-69	380-580 (-) <sup>3)</sup>	165	6.49	121 <sup>4)</sup> /91 <sup>5)</sup>	3363 1053 59
<b>RX53</b>	4200	9,260	40-70	88,200-154,300	160-180	2,320-2,610	250-320	66-85	350-560 (-) <sup>3)</sup>	180	7.08		3363 1097 39

<sup>1)</sup>Breaker and breaker box with standard adapter plus working tool.

<sup>2)</sup>Weights apply to standard carriers only. Any variances must be agreed with Chicago Pneumatic and/or the carrier manufacturer prior to attachment.

<sup>3)</sup>Power Control: The blow frequency and impact energy can be adjusted to better meet the application requirements.

<sup>4)</sup>Sound power level guaranteed.

<sup>5)</sup>Sound pressure level (r=10m).

**Important:** EN ISO 3744 in accordance with directive 2000/14/EC. Full details of measurement are available in the Safety and Operating Instruction of the product.

## RX hydraulic breakers – features at a glance

- Hybrid technology (gas/oil)
- Innovative design with less components
- Effective noise and vibration damping
- Highly efficient internal control valve
- Power booster
- Power stop function
- Power control valve\*
- Ventilation port\*\*
- Dual retainer bars\*\*

## Optional extras

- Field replaceable wear bushing (RX2 – RX11)
- CP-lube for optimum grease distribution
- HD Kit\*
- Dust wiper\*\*

\* From RX25 upwards

\*\* From RX14 upwards



# Original parts make your breaker even more effective



## Working tools

Poor quality tools can be a very expensive investment. If you're unlucky, pieces of low grade metal can shear off, enter the hydraulic system and cause serious damage to the breaker and carrier.

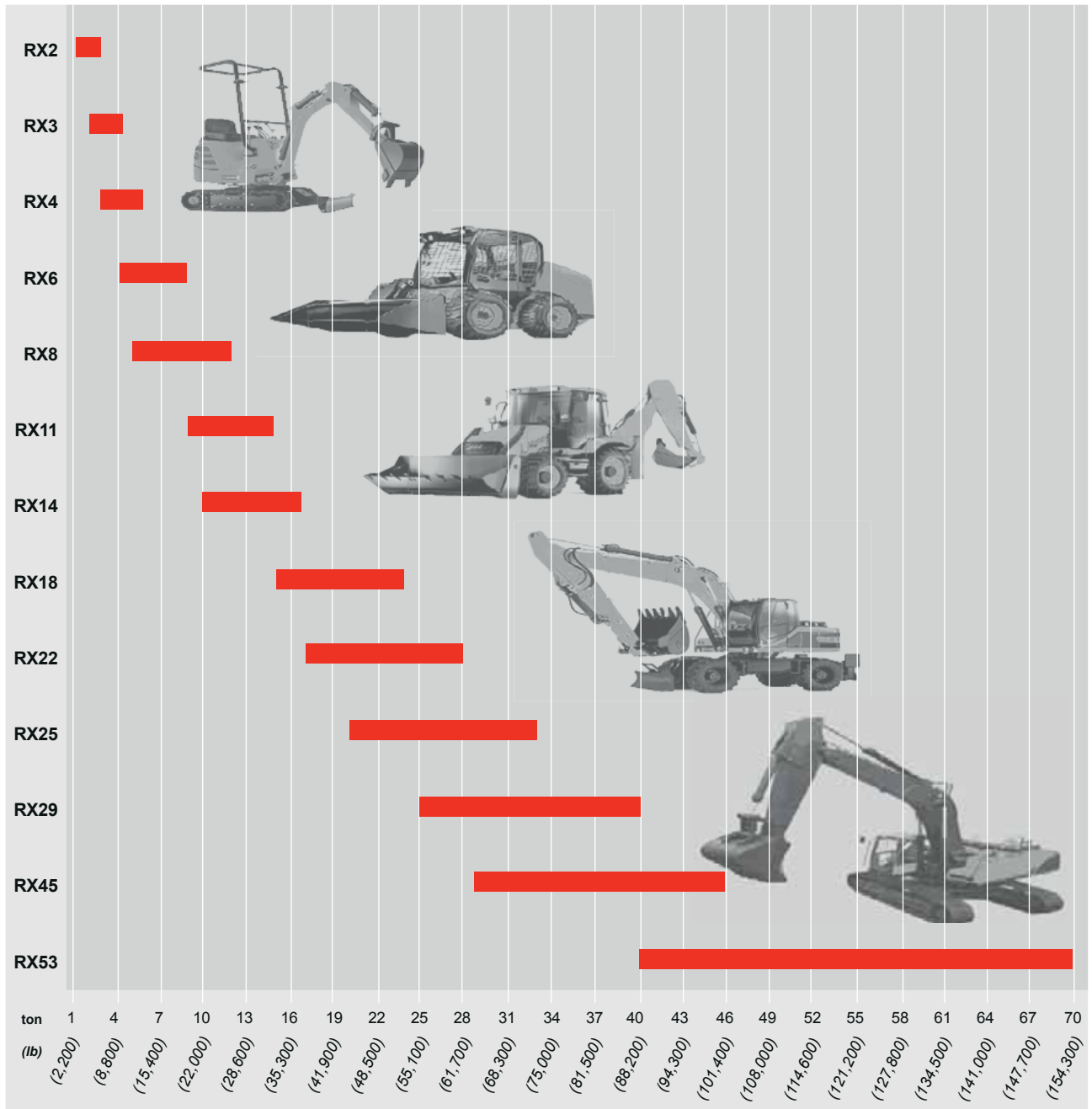
Chicago Pneumatic tools are manufactured to the highest quality standards with full control of the process. All tools are made from a nickel-chrome alloy that has been optimized for breaking applications. Each tool is precision formed and temper hardened for greater wear resistance.

## Chisel paste

Description	Size	Part no.
Chisel paste cartridge (for CP-Lube)	30 x 500 g	3363 0949 10

Model	Tool type	Working length		Total length		Part no.
RX2	Moil point (conical)	265 mm	10,43 in	425 mm	16,73 in	4211 1050 01
	Chisel (cross)	265 mm	10,43 in	425 mm	16,73 in	4211 1050 02
	Blunt tool	265 mm	10,43 in	425 mm	16,73 in	4211 1050 03
RX3	Moil point (conical)	320 mm	12,60 in	530 mm	20,87 in	4211 1051 01
	Chisel (cross)	320 mm	12,60 in	530 mm	20,87 in	4211 1051 02
	Blunt tool	320 mm	12,60 in	530 mm	20,87 in	4211 1051 03
RX4	Moil point (conical)	350 mm	13,78 in	590 mm	23,23 in	4211 1052 01
	Chisel (cross)	350 mm	13,78 in	590 mm	23,23 in	4211 1052 02
	Blunt tool	350 mm	13,78 in	590 mm	23,23 in	4211 1052 03
RX6	Moil point (conical)	380 mm	14,96 in	665 mm	26,18 in	4211 1053 01
	Chisel (cross)	380 mm	14,96 in	665 mm	26,18 in	4211 1053 02
	Blunt tool	380 mm	14,96 in	665 mm	26,18 in	4211 1053 03
RX8	Moil point (conical)	415 mm	16,34 in	745 mm	29,33 in	4211 1054 01
	Chisel (cross)	415 mm	16,34 in	745 mm	29,33 in	4211 1054 02
	Blunt tool	415 mm	16,34 in	745 mm	29,33 in	4211 1054 03
RX11	Moil point (conical)	390 mm	15,35 in	745 mm	29,33 in	4211 1054 01
	Chisel (cross)	390 mm	15,35 in	745 mm	29,33 in	4211 1054 02
	Blunt tool	390 mm	15,35 in	745 mm	29,33 in	4211 1054 03
RX14	Moil point (conical)	495 mm	19,49 in	895 mm	35,24 in	4211 1055 38
	Chisel (cross)	495 mm	19,49 in	895 mm	35,24 in	4211 1055 39
	Blunt tool	495 mm	19,49 in	895 mm	35,24 in	4211 1055 36
RX18	Moil point (conical)	540 mm	21,26 in	995 mm	39,17 in	4211 1055 33
	Chisel (cross)	540 mm	21,26 in	995 mm	39,17 in	4211 1055 34
	Blunt tool	540 mm	21,26 in	995 mm	39,17 in	4211 1055 31
RX22	Moil point (conical)	565 mm	22,24 in	1050 mm	41,34 in	4211 1055 27
	Chisel (cross)	565 mm	22,24 in	1050 mm	41,34 in	4211 1055 28
	Blunt tool	565 mm	22,24 in	1050 mm	41,34 in	4211 1055 25
RX25	Moil point (conical)	585 mm	23,03 in	1115 mm	43,90 in	4211 1055 03
	Chisel (cross)	585 mm	23,03 in	1115 mm	43,90 in	4211 1055 04
	Blunt tool	585 mm	23,03 in	1115 mm	43,90 in	4211 1055 01
RX29	Moil point (conical)	590 mm	23,23 in	1225 mm	48,23 in	4211 1055 09
	Chisel (cross)	590 mm	23,23 in	1225 mm	48,23 in	4211 1055 10
	Blunt tool	590 mm	23,23 in	1225 mm	48,23 in	4211 1055 07
RX45	Moil point (conical)	670 mm	26,38 in	1365 mm	53,74 in	4211 1055 15
	Chisel (cross)	670 mm	26,38 in	1365 mm	53,74 in	4211 1055 16
	Blunt tool	670 mm	26,38 in	1365 mm	53,74 in	4211 1055 13
RX53	Moil point (conical)	735 mm	28,94 in	1500 mm	59,06 in	4211 1055 21
	Chisel (cross)	735 mm	28,94 in	1500 mm	59,06 in	4211 1055 22
	Blunt tool	735 mm	28,94 in	1500 mm	59,06 in	4211 1055 19

# Carrier classes





## Over 100 years of experience

Since 1901 the name Chicago Pneumatic has stood for innovative, high-performance power tools. Today a wide range of pneumatic and hydraulic construction tools, including breakers, clay diggers, picks and busters, scabblers, rock drills, rotary and chipping hammers, sump and sludge pumps, and a whole lot more, are available through a worldwide sales organization.

For more detailed information and copy of CP complete catalogue, please contact:

Use only authorized parts. Any damage or malfunction caused by the use of unauthorized parts is not covered by Warranty or Product Liability.